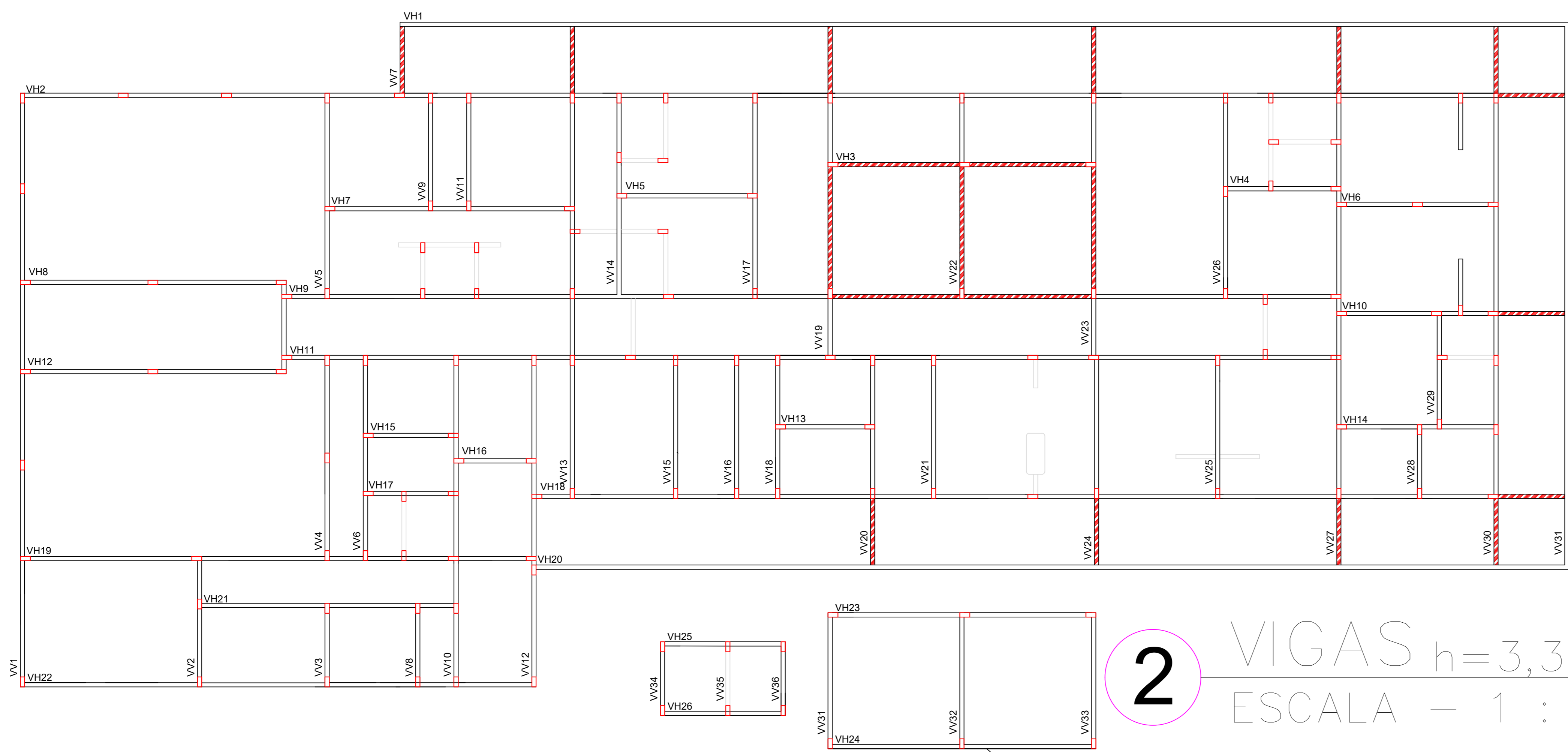
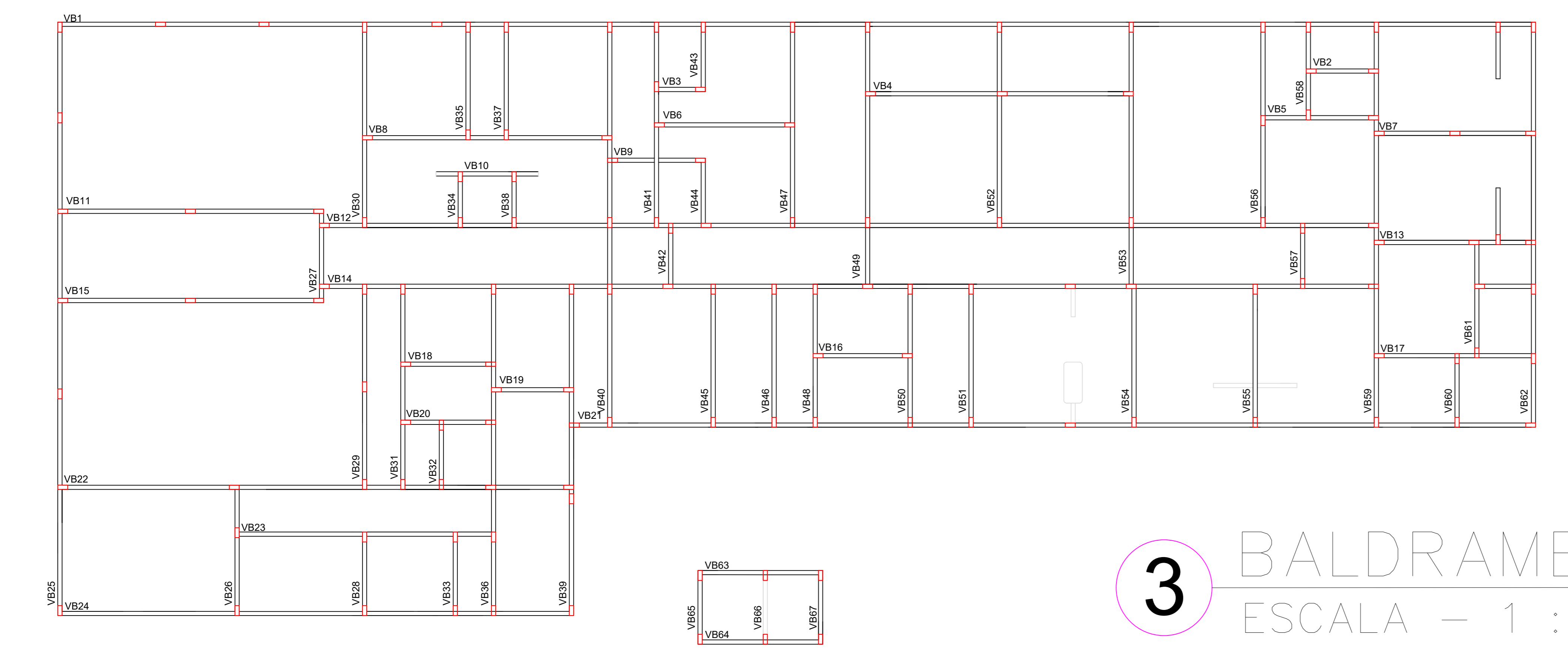


**1** LAJES  $h=3,30$   
ESCALA - 1 : 100

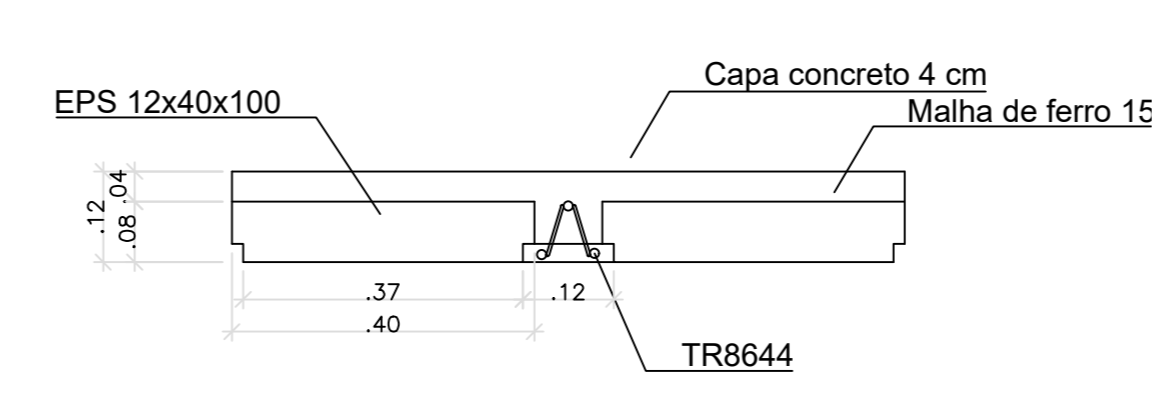


**2** VIGAS  $h=3,30$   
ESCALA - 1 : 100  
Vigas cobertura ex d'água  
 $h=6,30$

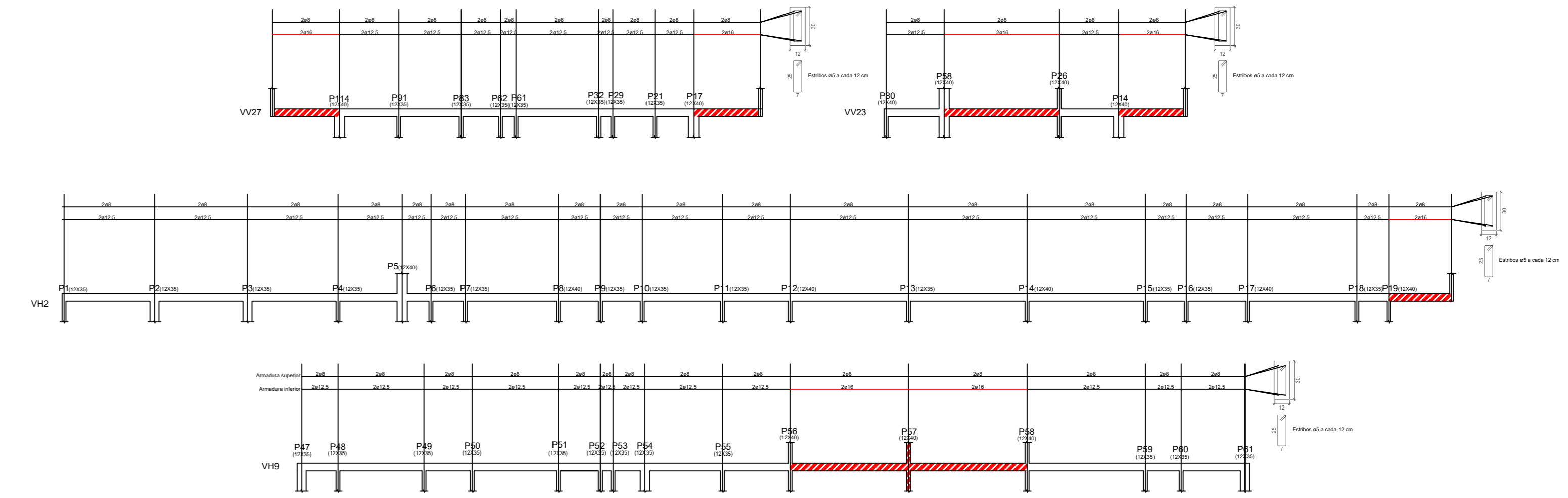


**3** BALDRAMES  $h=0,00$   
ESCALA - 1 : 100

DETALHE-LAJE  
SEM ESCALA



DETALHE-VIGAS  
SEM ESCALA



Viga	Dimensão	Comprimento	Ferroglass Superior	Ferroglass Inferior	Estaca	Isola	Flm.
V001	12x30	62,14	2x8	2x8	45 x 12cm	P1	P19
V002	12x30	2,55	2x8	2x8	45 x 12cm	P03	P01
V003	12x30	1,80	2x8	2x8	45 x 12cm	P02	P02
V004	12x30	8,45	2x8	2x8	45 x 12cm	P04	P05
V005	12x30	4,15	2x8	2x8	45 x 12cm	P08	P09
V006	12x30	4,80	2x8	2x8	45 x 12cm	P09	P01
V007	12x30	5,70	2x8	2x8	45 x 12cm	P02	P04
V008	12x30	8,80	2x8	2x8	45 x 12cm	P05	P08
V009	12x30	9,45	2x8	2x8	45 x 12cm	P09	P04
V010	12x30	9,60	2x8	2x8	45 x 12cm	P02	P03
V011	12x30	9,38	2x8	2x8	45 x 12cm	P04	P08
V012	12x30	37,37	2x8	2x8	45 x 12cm	P02	P01
V013	12x30	5,70	2x8	2x8	45 x 12cm	P02	P03
V014	12x30	37,37	2x8	2x8	45 x 12cm	P06	P03
V015	12x30	9,38	2x8	2x8	45 x 12cm	P09	P08
V016	12x30	3,50	2x8	2x8	45 x 12cm	P09	P06
V017	12x30	5,70	2x8	2x8	45 x 12cm	P01	P04
V018	12x30	3,30	2x8	2x8	45 x 12cm	P05	P06
V019	12x30	2,80	2x8	2x8	45 x 12cm	P09	P02
V020	12x30	3,35	2x8	2x8	45 x 12cm	P01	P03
V021	12x30	34,10	2x8	2x8	45 x 12cm	P10	P10
V022	12x30	16,20	2x8	2x8	45 x 12cm	P11	P10
V023	12x30	9,20	2x8	2x8	45 x 12cm	P10	P10
V024	12x30	19,20	2x8	2x8	45 x 12cm	P10	P10
V025	12x30	21,00	2x8	2x8	45 x 12cm	P1	P10

Viga	Dimensão	Comprimento	Ferroglass Superior	Ferroglass Inferior	Estaca	Isola	Flm.
V026	12x30	4,50	2x8	2x8	45 x 12cm	P10	P10
V027	12x30	3,30	2x8	2x8	45 x 12cm	P06	P08
V028	12x30	2,50	2x8	2x8	45 x 12cm	P4	P08
V029	12x30	7,20	2x8	2x8	45 x 12cm	P02	P10
V030	12x30	7,20	2x8	2x8	45 x 12cm	P10	P11
V031	12x30	7,20	2x8	2x8	45 x 12cm	P06	P10
V032	12x30	2,65	2x8	2x8	45 x 12cm	P10	P11
V033	12x30	4,15	2x8	2x8	45 x 12cm	P10	P10
V034	12x30	1,97	2x8	2x8	45 x 12cm	P12	P09
V035	12x30	4,15	2x8	2x8	45 x 12cm	P02	P08
V036	12x30	11,70	2x8	2x8	45 x 12cm	P08	P10
V037	12x30	4,15	2x8	2x8	45 x 12cm	P7	P07
V038	12x30	1,80	2x8	2x8	45 x 12cm	P03	P08
V039	12x30	14,30	2x8	2x8	45 x 12cm	P8	P10
V040	12x30	2,65	2x8	2x8	45 x 12cm	P02	P10
V041	12x30	7,20	2x8	2x8	45 x 12cm	P5	P02
V042	12x30	2,30	2x8	2x8	45 x 12cm	P03	P10
V043	12x30	2,65	2x8	2x8	45 x 12cm	P10	P10
V044	12x30	2,65	2x8	2x8	45 x 12cm	P01	P04
V045	12x30	5,55	2x8	2x8	45 x 12cm	P10	P10
V046	12x30	5,55	2x8	2x8	45 x 12cm	P10	P10
V047	12x30	7,20	2x8	2x8	45 x 12cm	P11	P08
V048	12x30	5,55	2x8	2x8	45 x 12cm	P10	P10
V049	12x30	9,60	2x8	2x8	45 x 12cm	P12	P10
V050	12x30	5,55	2x8	2x8	45 x 12cm	P11	P10

Viga	Dimensão	Comprimento	Ferroglass Superior	Ferroglass Inferior	Estaca	Isola	Flm.
V051	12x30	3,00	2x8	2x8	45 x 12cm	P10	P10
V052	12x30	7,20	2x8	2x8	45 x 12cm	P10	P07
V053	12x30	3,60	2x8	2x8	45 x 12cm	P14	P10
V054	12x30	3,00	2x8	2x8	45 x 12cm	P09	P10
V055	12x30	5,55	2x8	2x8	45 x 12cm	P01	P10
V056	12x30	7,20	2x8	2x8	45 x 12cm	P10	P10
V057	12x30	3,00	2x8	2x8	45 x 12cm	P09	P09
V058	12x30	3,60	2x8	2x8	45 x 12cm	P10	P11
V059	12x30	14,30	2x8	2x8	45 x 12cm	P12	P14
V060	12x30	3,00	2x8	2x8	45 x 12cm	P09	P10
V061	12x30	4,40	2x8	2x8	45 x 12cm	P10	P10
V062	12x30	4,15	2x8	2x8	45 x 12cm	P03	P08
V063	12x30	14,30	2x8	2x8	45 x 12cm	P10	P10
V064	12x30	4,40	2x8	2x8	45 x 12cm	P10	P10
V065	12x30	2,80	2x8	2x8	45 x 12cm	P10	P10
V066	12x30	2,80	2x8	2x8	45 x 12cm	P10	P10
V067	12x30	2,80	2x8	2x8	45 x 12cm	P10	P10

Laje	Enchimento	Tf/tp
1	EPS 12x40x100	TR8644
2	EPS 12x40x100	TR8644
3	EPS 12x40x100	TR8644
4	EPS 12x40x100	TR8644
5	EPS 12x40x100	TR8644
6	EPS 12x40x100	TR8644
7	EPS 12x40x100	TR8644
8	EPS 12x40x100	TR8644
9	EPS 12x40x100	TR8644
10	EPS 12x40x100	TR8644
11	EPS 12x40x100	TR8644
12	EPS 12x40x100	TR8644
13	EPS 12x40x100	TR8644
14	EPS 12x40x100	TR8644
15	EPS 12x40x100	TR8644
16	EPS 12x40x100	TR8644
17	EPS 12x40x100	TR8644
18	EPS 12x40x100	TR8644
19	EPS 12x40x100	TR8644
20	EPS 12x40x100	TR8644
21	EPS 12x40x100	TR8644
22	EPS 12x40x100	TR8644
23	EPS 12x40x100	TR8644
24	EPS 12x40x100	TR8644
25	EPS 12x40x100	TR8644

Laje	Enchimento	Tf/tp
26	EPS 12x40x100	TR8644
27	EPS 12x40x100	TR8644
28	EPS 12x40x100	TR8644
29	EPS 12x40x100	TR8644
30	EPS 12x40x100	TR8644
31	EPS 12x40x100	TR8644
32	EPS 12x40x100	TR8644
33	EPS 12x40x100	TR8644
34	EPS 12x40x100	TR8644
35	EPS 12x40x100	TR8644
36	EPS 12x40x100	TR8644
37	EPS 12x40x100	TR8644
38	EPS 12x40x100	TR8644
39	EPS 12x40x100	TR8644
40	EPS 12x40x100	TR8644
41	EPS 12x40x100	TR8644
42	EPS 12x40x100	TR8644
43	EPS 12x40x100	TR8644
44	EPS 12x40x100	TR8644
45	EPS 12x40x100	TR8644
46	EPS 12x40x100	TR8644
47	EPS 12x40x100	TR8644
48	EPS 12x40x100	TR8644
49	EPS 12x40x100	TR8644
50	EPS 12x40x100	TR8644

Laje	Enchimento	Tf/tp
51	EPS 12x40x100	TR8644
52	EPS 12x40x100	TR8644
53	EPS 12x40x100	TR8644
54	EPS 12x40x100	TR8644
55	EPS 12x40x100	TR8644
56	EPS 12x40x100	TR8644
57	EPS 12x40x100	TR8644
58	EPS 12x40x100	TR8644
59	EPS 12x40x100	TR8644
60	EPS 12x40x100	TR8644
61	EPS 12x40x100	TR8644
62	EPS 12x40x100	TR8644

**Viga reforçada**

**PROJETO ESTRUTURAL**

Centro de Saúde Animal - Unifimes

ENDEREÇO: Av. 22, 356 - Mineiros, GO 75833-130



PROPRIETÁRIO  
FUNDAÇÃO INTEGRADA MUNICIPAL DE ENSINO SUPERIOR  
CNPJ: 01.465.988/0001-27

AUTOR DO PROJETO  
SOCRATES CARVALHO OLIVEIRA  
ARQ. URBANISTA CAU A31968-6 RN

AUTOR DO PROJETO  
PEDRO HENRIQUE MARTINS GOULART  
ENG. CIVIL CREA-GO 101940650 D

**NÚCLEO DE ENGENHARIA**

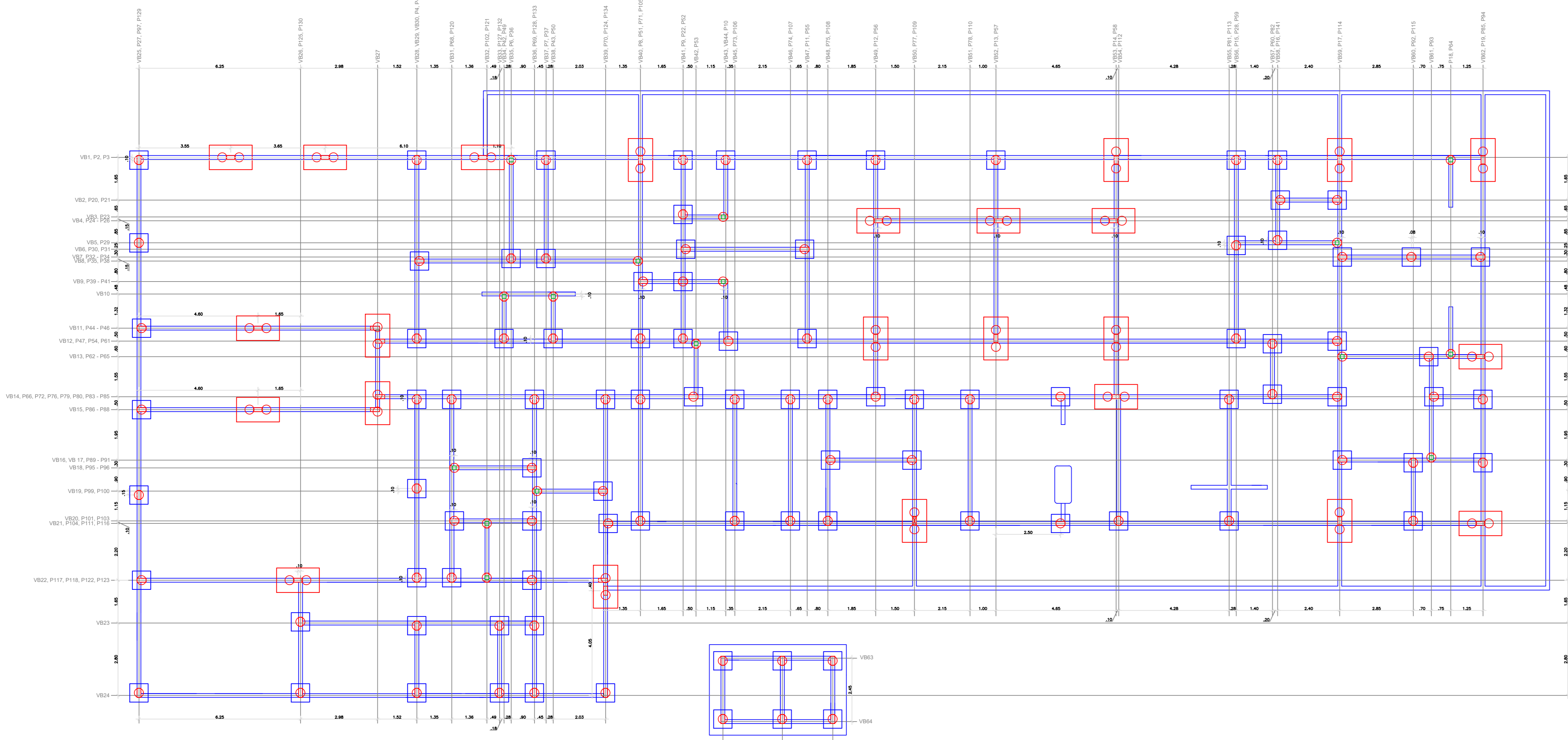
CENTRO UNIVERSITÁRIO DE MINEIROS  
Fone: (64) 36725100  
E-mail: pedro@unifimes.edu.br  
AV 22, 356 - Setor Aeroporto  
CEP: 75.833-130, Mineiros - GO.

ÁREA DO TERRENO: 2230,00m²  
ÁREA TOTAL CONSTRUIDA: 1062,55m² (47,64%)  
ÁREA JA CONSTRUÍDA: 194,57m² (8,72%)  
ÁREA PERMEEVAL: 972,88m² (43,62%)

CONTÉUDO:  
LAJES  
VIGAS  
BALDRAMES  
DETALHAMENTOS

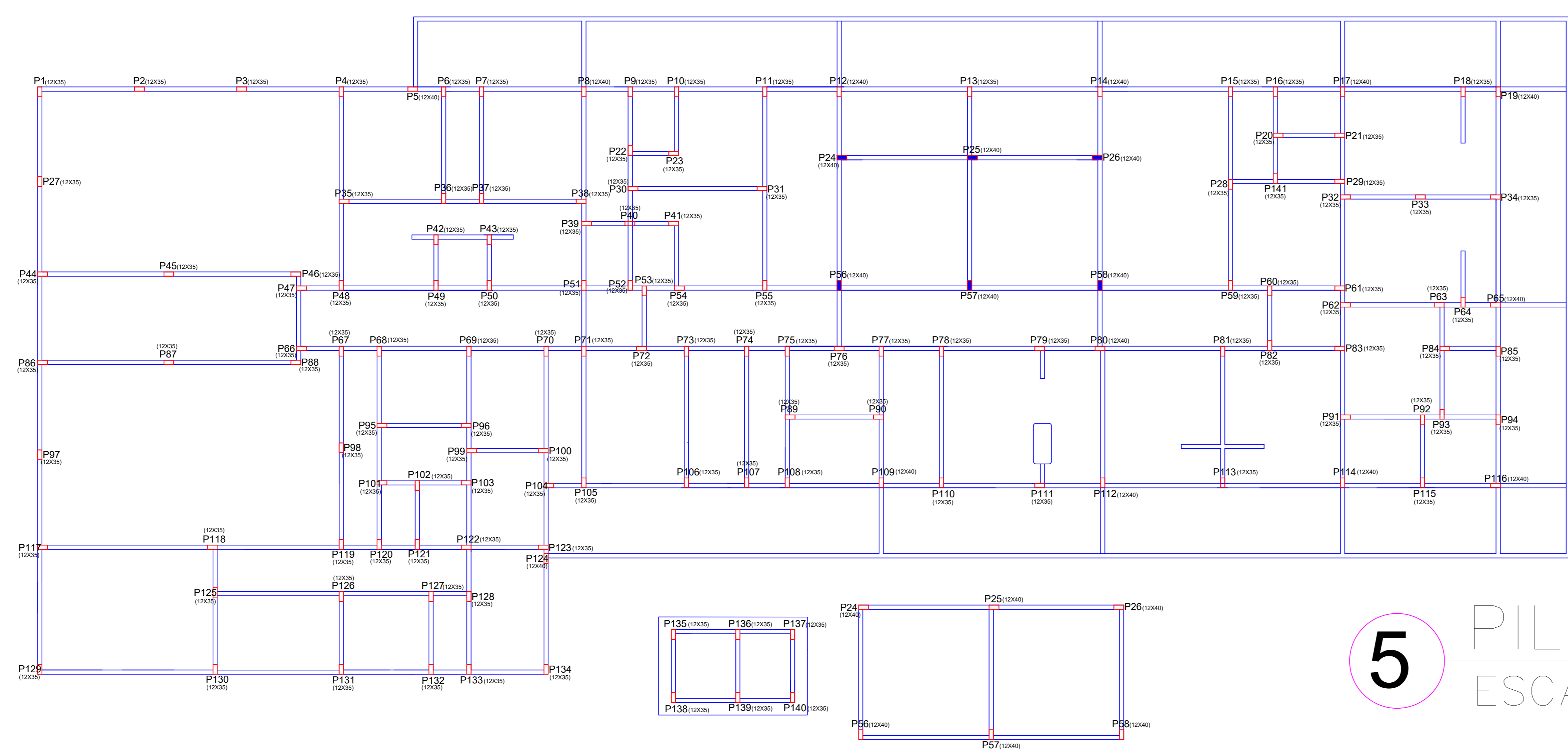
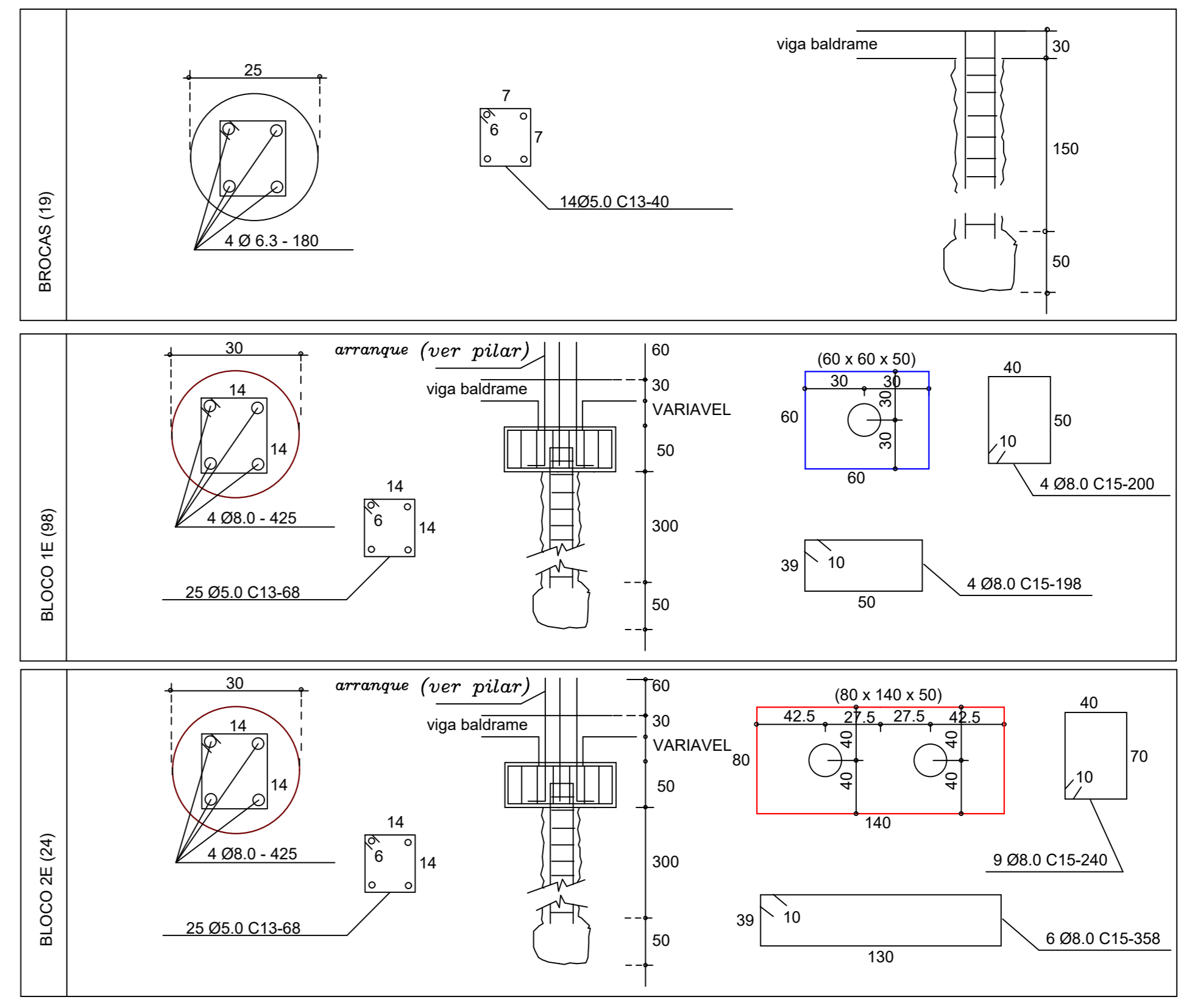
Nº DE PAVIMENTOS: 1  
ESCALA: INDICADA  
DATA: AGOSTO de 2022  
DESENHO: ENG. PEDRO GOULART





# 4 FUNDAÇÕES

ESCALA -1 : 100



# 5 PILARES

ESCALA -1 : 100

- Pilar que continua
- Pilar que termina

Coluna	Dimensão	Feragens	Estubo	Equipamento	Itens	Fin.
1	12x35	4x8	as	12 cm	0,00	4,30
2	12x35	4x8	as	12 cm	0,00	4,30
3	12x35	4x8	as	12 cm	0,00	4,30
4	12x35	4x8	as	12 cm	0,00	4,30
5	12x40	4x10	as	12 cm	0,00	4,30
6	12x35	4x8	as	12 cm	0,00	3,30
7	12x35	4x8	as	12 cm	0,00	3,30
8	12x40	4x10	as	12 cm	0,00	3,30
9	12x35	4x8	as	12 cm	0,00	3,30
10	12x35	4x8	as	12 cm	0,00	3,30
11	12x35	4x8	as	12 cm	0,00	3,30
12	12x35	4x8	as	12 cm	0,00	3,30
13	12x35	4x8	as	12 cm	0,00	3,30
14	12x40	4x10	as	12 cm	0,00	3,30
15	12x35	4x8	as	12 cm	0,00	3,30
16	12x35	4x8	as	12 cm	0,00	3,30
17	12x40	4x10	as	12 cm	0,00	3,30
18	12x35	4x8	as	12 cm	0,00	3,30
19	12x40	4x10	as	12 cm	0,00	4,30
20	12x35	4x8	as	12 cm	0,00	3,30
21	12x35	4x8	as	12 cm	0,00	3,30
22	12x35	4x8	as	12 cm	0,00	3,30
23	12x35	4x8	as	12 cm	0,00	3,30
24	12x40	4x10	as	12 cm	0,00	3,30
25	12x40	4x10	as	12 cm	0,00	4,30

## PROJETO ESTRUTURAL

Centro de Saúde Animal - Unifimes

ENDEREÇO: Av. 22, 356 - Mineiros, GO 75833 - 130



PROPRIETÁRIO  
FUNDAÇÃO INTEGRADA MUNICIPAL DE ENSINO SUPERIOR  
CNPJ: 01.465.988/0001-27

AUTOR DO PROJETO  
SOCRATES CARVALHO OLIVEIRA  
ARQ. URBANISTA CAU A31968-6 RN

NÚCLEO DE ENGENHARIA  
CENTRO UNIVERSITÁRIO DE MINEIROS

AUTOR DO PROJETO  
PEDRO HENRIQUE MARTINS GOULART  
ENG. CIVIL CREA-GO 1019406550 D

Fone: (64) 36725100  
E-mail: pedro@unifimes.edu.br  
AV 22, 356 - Setor Aeroporto  
CEP: 75.833-130, Mineiros - GO.

ÁREA DO TERRENO: <b>2230,00m²</b>	CONTEÚDO: PLANTA BAIXA E LAYOUT FACHADA LATERAL CORTE CC	Nº DE PAVIMENTOS: 1	FRANCHA:
ÁREA TOTAL CONSTRUÍDA: <b>1062,55m² (47,64%)</b>		ESCALA: INDICADA	
ÁREA JA CONSTRUÍDA: <b>194,57m² (8,72%)</b>		DATA: AGOSTO DE 2022	
ÁREA PERMITEVEL: <b>972,88m² (43,62%)</b>		DESENHO: ENG. PEDRO GOULART	