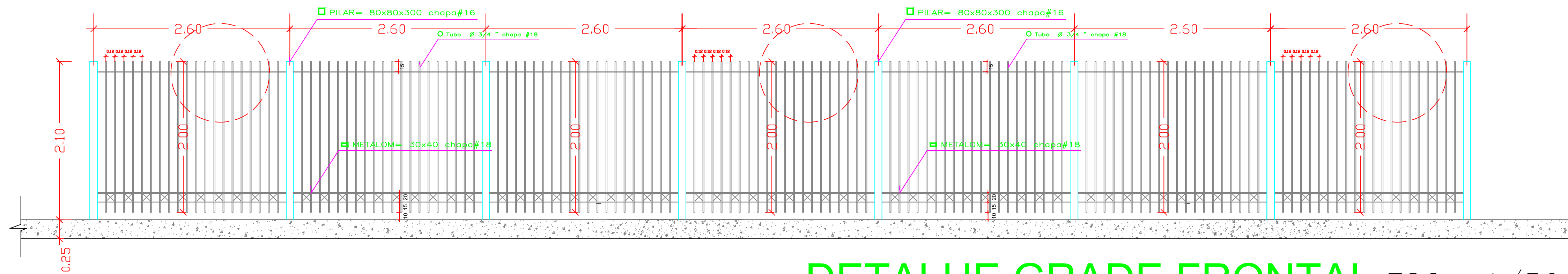
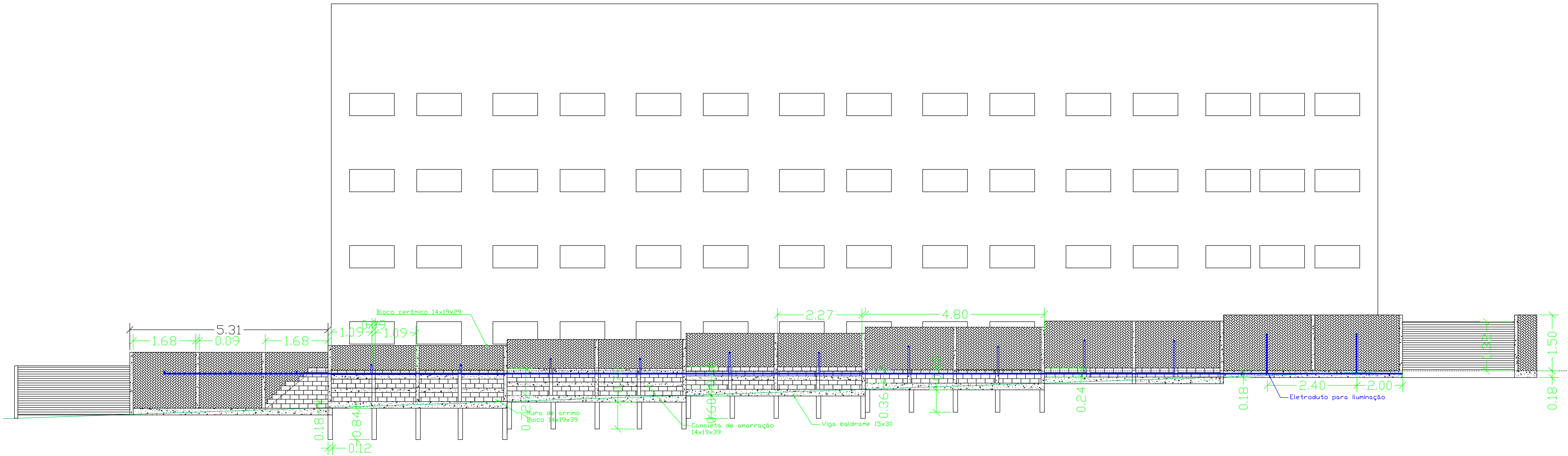


COR. 01 02 03 04 05 06 13 14 30 42 150 240
 PENA 0.1 0.1 0.1 0.1 0.125 0.15 0.1 0.8 0.25 0.3 0.1 0.1 0.3



DETALHE GRADE FRONTAL ESC.: 1/50



DETALHE DO MURO DE ALVENARIA
FACHADA LATERAL

ESC.: S/ ESCALA

ARQUITETURA	FIMES (INSTITUCIONAL)		Folha: 03/03
	Local: AVENIDA CAIAPO ESQUINA COM RUA 23, QUADRA 15, SETOR AEROPORTO MINEIROS - GO.		
	Área=159,44m ² Grade ou Alambrado=525Metros Linear	Data: Março 2022	
	FUNDACÃO INTEGRAL DE ENSINO SUPERIOR DE MINEIROS		
Antônio Celso Machado Júnior CREA: 3662411488/D-SP			